

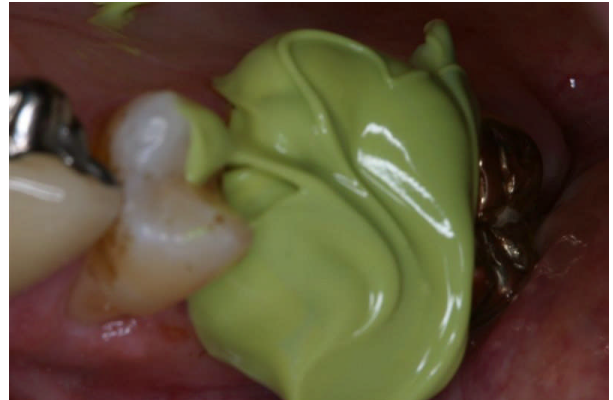
# CHAMPIONS CROWN AND BRIDGE LAB INC.

CROWN UNDER A CLASP... WITHOUT  
SENDING THE PARTIAL TO THE LAB

## Clinical



After preparation and impression re-seat the partial to check for clearance and a positive seat

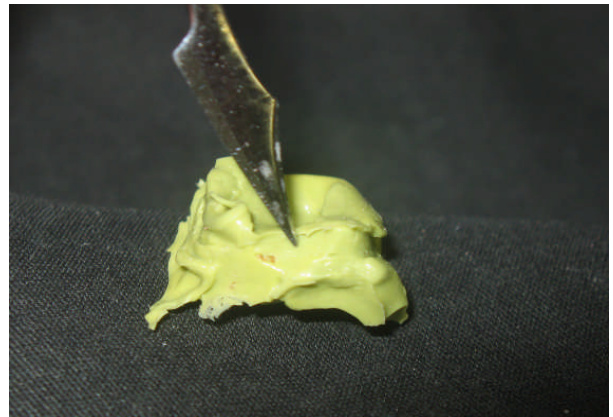


Surround Prep with light body impression material...

*BE GENEROUS!*



Quickly seat the partial into the material, being sure it completely seats and the clasps and rests are completely imbedded. A good idea is to have the patient occlude.



Once the material sets, peel the "matrix" from the clasps and check for voids in the rest and clasp areas.

Disinfect matrix and bag separately with a note on Rx that the crown is under a partial.

9841 Whithorn Dr.

[images@championscrownandbridge.com](mailto:images@championscrownandbridge.com) 281-855-7800 Thanks to Dr. Anthony Hill for photos